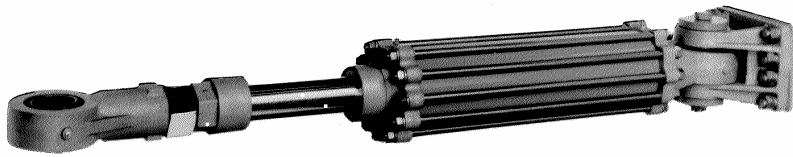


MODEL 7096 6" I.D. STEERING CYLINDER



Design pressure: 2000 psi (138 bar)
Material: Steel tube, Stainless steel rods

ORDERING INFORMATION

- 7096 – U16 Cylinder with 16" stroke
- 7096 – U20 Cylinder with 20" stroke
- 7096 – U24 Cylinder with 24" stroke
- 7096 – U30 Cylinder with 30" stroke
- 7096 – U36 Cylinder with 36" stroke

Weight: 454 lb (206 kg) for the 16" stroke model
Add approx. 6.2 lb (2.8 kg) for each additional 1" stroke

The 7096 cylinder is designed for the boat owner who requires the utmost in performance and reliability. The castings are all made in manganese bronze. The steel barrel is microhoned. Tie rods and piston rods are made of stainless steel. The spherical bearings on either end are extra large and would hardly require replacement. The piston seals are of urethane material. Upon special request the cylinder can be equipped with metal piston rings. The piston rod uses "V-packing" seals and has an adjusting nut for stroke adjustment. Since these cylinders are only available in an unbalanced configuration, tandem cylinders are required for all installations.

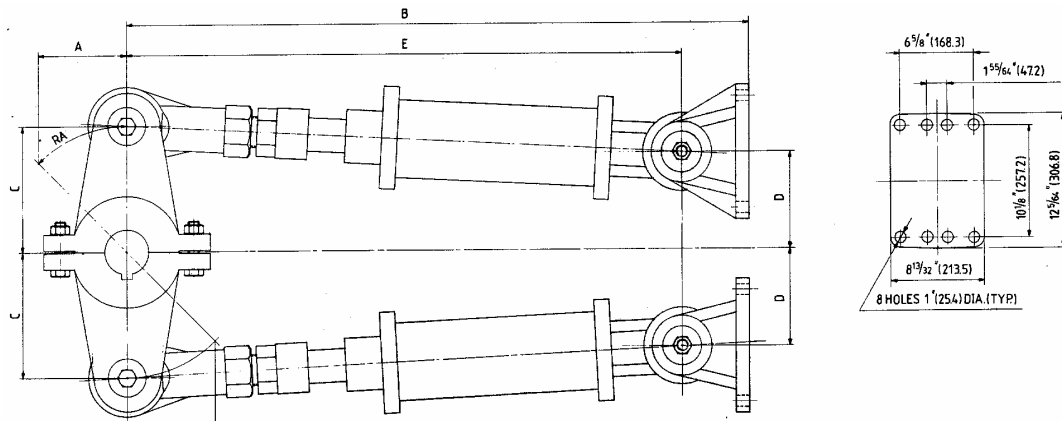
Rudder angle (RA) 35°

* Torque is based on two cylinders and 2000 psi (138 bar)

*Torque		Stroke		Displacement		A		B		C		D		E	
ft-lb	kg-m	in.	mm	in ³	cm ³	in.	mm	in.	mm	in.	mm	in.	mm	in.	mm
94236	13048	16	406	792	12979	8	203	65	1651	14.0	354	12.7	322	58.8	1492
117744	16304	20	508	990	16223	10	254	71	1803	17.4	443	15.9	403	64.8	1645
141320	19568	24	610	1188	19468	12	305	77	1956	20.9	531	19.0	483	70.8	1797
176650	24460	30	762	1484	24318	15	381	86	2184	26.2	664	23.8	604	79.8	2026
211980	29352	36	914	1781	29185	18	457	95	2413	31.4	797	28.5	725	88.8	2254

Rudder angle (RA) 45°

65952	9132	16	406	792	12979	8	203	65	1651	11.3	287	9.7	245	58.8	1492
82454	11418	20	508	990	16223	10	254	71	1803	14.1	359	12.1	307	64.8	1645
98956	13702	24	610	1188	19468	12	305	77	1956	17.0	431	14.5	368	70.8	1797
123682	17126	30	762	1484	24318	15	381	86	2184	21.2	539	18.1	460	79.8	2026
148464	20558	36	914	1781	29185	18	457	95	2413	25.5	647	21.7	552	88.8	2254



DIMENSIONS AND PARTS LIST MODEL 7096

ITEM	QTY	PART NO.	DESCRIPTION	ITEM	QTY	PART NO.	DESCRIPTION
1	1	7096-0001	Front End Cap	21	20	1022-0267	Tie Rod Nut
2	1	7096-0002	Foot	22	1	7096-0022	Piston Retaining Nut
3	1	7096-0003	Rear End Cap	23	1	1022-0288	Rod End Nut
4	1	7096-0004	Rod End	24	20	1023-0318	Lock Washer
5	1	7096-0005	Stop Nut	25	2	1029-3500	Retaining Ring
6	1	7096-0006	Tube	26	2	1026-0832	Cotter Pin
7	1	7096-0007	Bushing	27	1	1026-1260	Cotter Pin
8	1	7096-0008	Piston	28	2	1016-1204	Set Screw
9	1	7096-0009	Piston Rod	29	4	1016-1208	Set Screw
10	10	7096-0010	Tie Rod	30	2	7096-8220	Spherical Bearing
11	1	7096-0011	Packing Nut	31	1	1016-1104	Set Screw
12	1	7096-0012	Rear Bearing Sleeve	32	1	7096-0032	Wear Ring
13	4	7096-0013	Sleeve Retainer	33	1	7096-0033	"V" Packing
14	2	7096-0014	Rear Spacer	34	2	1102-2045	"U" Cup
15	2	7040-0011	Bleed Screw	35	1	1101-0230	"O" Ring
16	2	2542-0008	Friction Pad	36	2	1101-0256	"O" Ring
17	2	1301-0005	Ball	37	2	7096-0037	Front Spacer
18	2	1501-0302	Grease Nipple	38	1	7096-0038	Front Bearing Sleeve
19	1	1001-72136	Rear Hex Cap Screw	39	1	1001-72160	Front Hex Cap Screw
20	2	1022-0572	Castle Nut	40	2	7096-0016	Washer, piston

