



Model 2093 Remote Control

Used in a single engine two station system, Model 2093, the Remote Control for 2091, is of the same rugged design as the main control, which is made of die cast silicon bronze and stainless steel hardware and is backed with our usual warranty. This head comes with all the hardware necessary to mount the interconnecting cables.

The cable used to interconnect the control heads or stations (2091-2093) must be pull-pull cables known as the 47 series cables.

The push-pull control cable between the main station 2091 and the clutch and throttle should be connected before the interconnecting pull-pull cable is installed.

Letter Code Designation:

- K – with chrome finish cover and handle
- L – with polished brass finish cover and handle
- M – with black epoxy finish cover and chrome handle
- U – curved handle
- V – T-bar handle with black plastic grip
- X – short handle
- Y – T-bar handle
- Z – with riveted metal labels

Example:

2093-KYZ is a single engine remote control with chrome finish, T-bar handle and riveted label.

NOTE: Two cables per engine are required for interconnecting the master (model 2091) and remote control (model 2093). These are 47 series pull-pull cables and are available in even foot lengths.

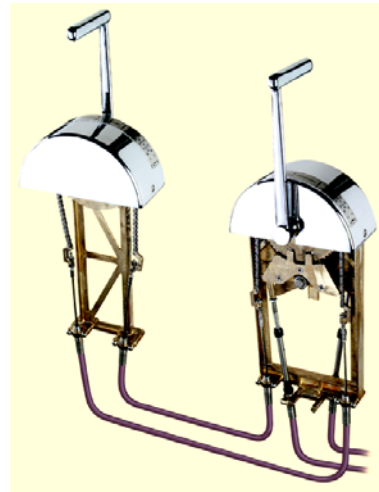
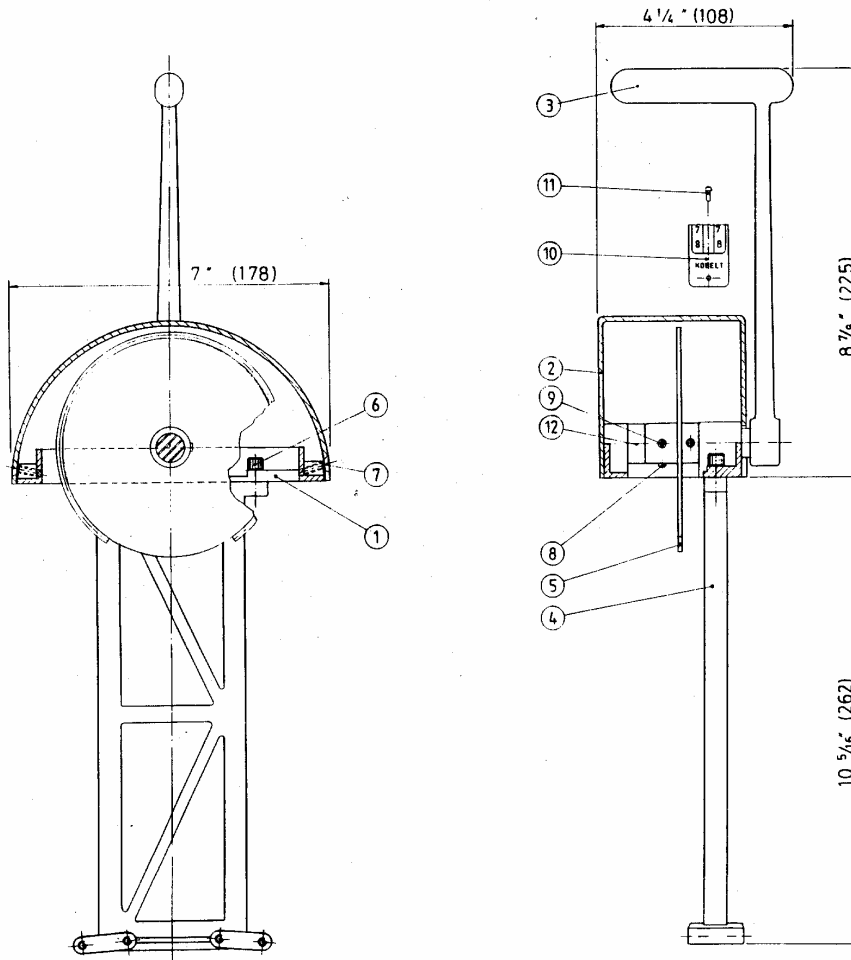
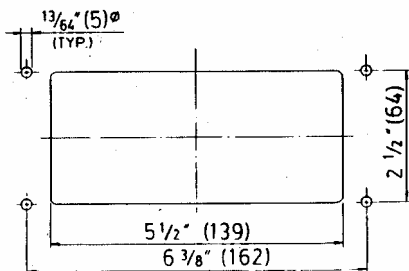


Diagram showing cable connection between stations.

MODEL 2093



All dimensions in inches (mm)



Cut-out Dimensions

Item	Qty	Part Number	Description
1	1	2006-0001	Frame
2	1	2006-0002	Dome
3	1*	2545-0014	Handle (T-bar)
3	1*	2046-0012	Handle (curved)
4	1	2093-0001	Support
5	1	2093-0002	Sprocket
6	2	1002-1008	Hex Socket Hd Cap Screw
7	2	1011-0808	Oval Hd Mach. Screw
8	1	1016-0804	Hex Socket Set Screw
9	2	1024-0816	Spring Pin
10	1	2050-0026	Label
11	2	1032-0304	Rivet
12	1	2090-0021	Spacer